

Customer :

customer

Customer part :

customer part

Comment :

Comment

S1=1.94

S2=2.46

Tmax=454

Tp S2=493.0

PI=0.44

HI=126

Sample =1652.10

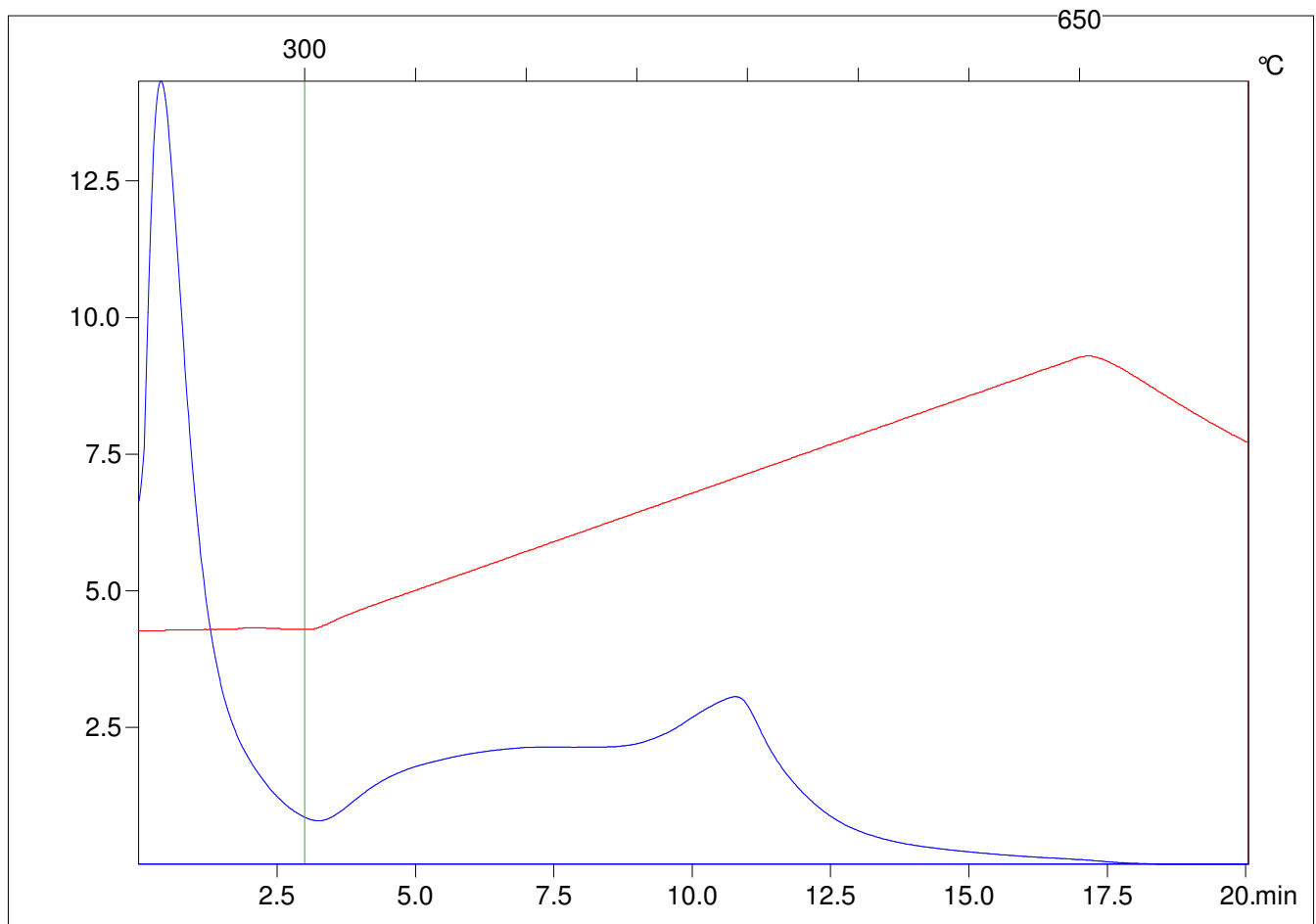
Method =Bulk Rock

Cycle=Basic

KFID(10\*9)=1444

Qty =70.7

TOC=1.96



C:\VINC\PK1792\PK068.R00 : FID pyrolysis graphic

State

Pyro Status

Oxi Status